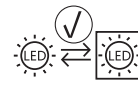
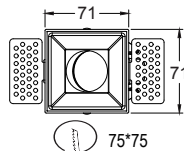


AC220-240V
~ 50/60HzMorsettiera certificate chiusa
Closed certified terminal boardL
N

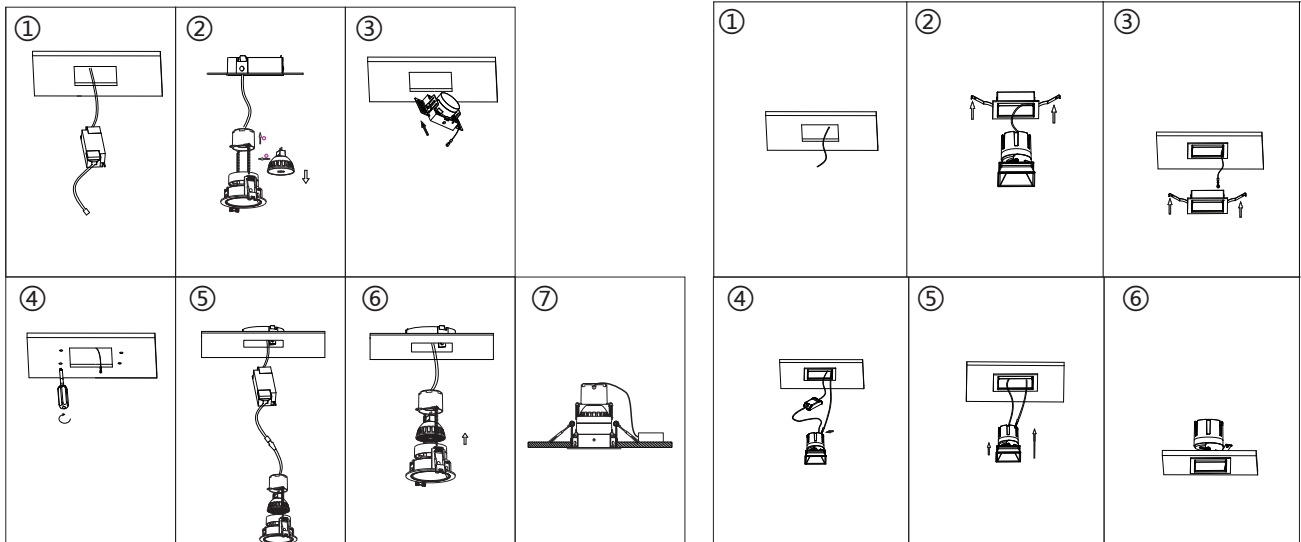
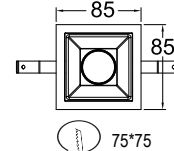
Cavo in doppia guaina/Double-sheathed cable

Replaceable (LED only) light source by an end-user
Sorgente luminosa sostituibile (solo LED) da parte di un utente finale

DEEP_EVO Q_LESS GU10 CORPO



DEEP_EVO Q_GU10 CORPO



Togliere tensione prima dell'installazione o qualsiasi manutenzione .



L'installazione e la manutenzione devono essere affidate a personale qualificato e devono essere eseguite conformemente alle prescrizioni delle vigenti normative impianti .

Disconnect the power supply before installation or any maintenance work .

Installation and maintenance must be carried by qualified personnel and according to the current Directives on electrical systems .

Questo apparecchio è compatibile con Sorgenti Luminose di Classe Energetica da E a A++ (EU 874/2012) e dal 01.09.2021 con Classe Energetica da G a A (EU2019/2015)

This luminaire is compatible with Lighting Sources with Class Energy E to A++ (EU874/2012) and from 01.09.2021 with Class Energy from G to A (EU2019/2015)

Il simbolo  riportato sull'apparecchio indica che il prodotto deve essere smaltito in modo differenziato dai rifiuti urbani.This symbol  shown on the device indicates that the product must be disposed of in a way which differs from the standard urban rubbish.

LOGICA è un marchio

MARINO CRISTAL SPA
Via Guardia del Consiglio, 31
47899 Serravalle Repubblica di San Marino
el. 0549 901188 - Fax 0549 900612
www.marinocristal.com

